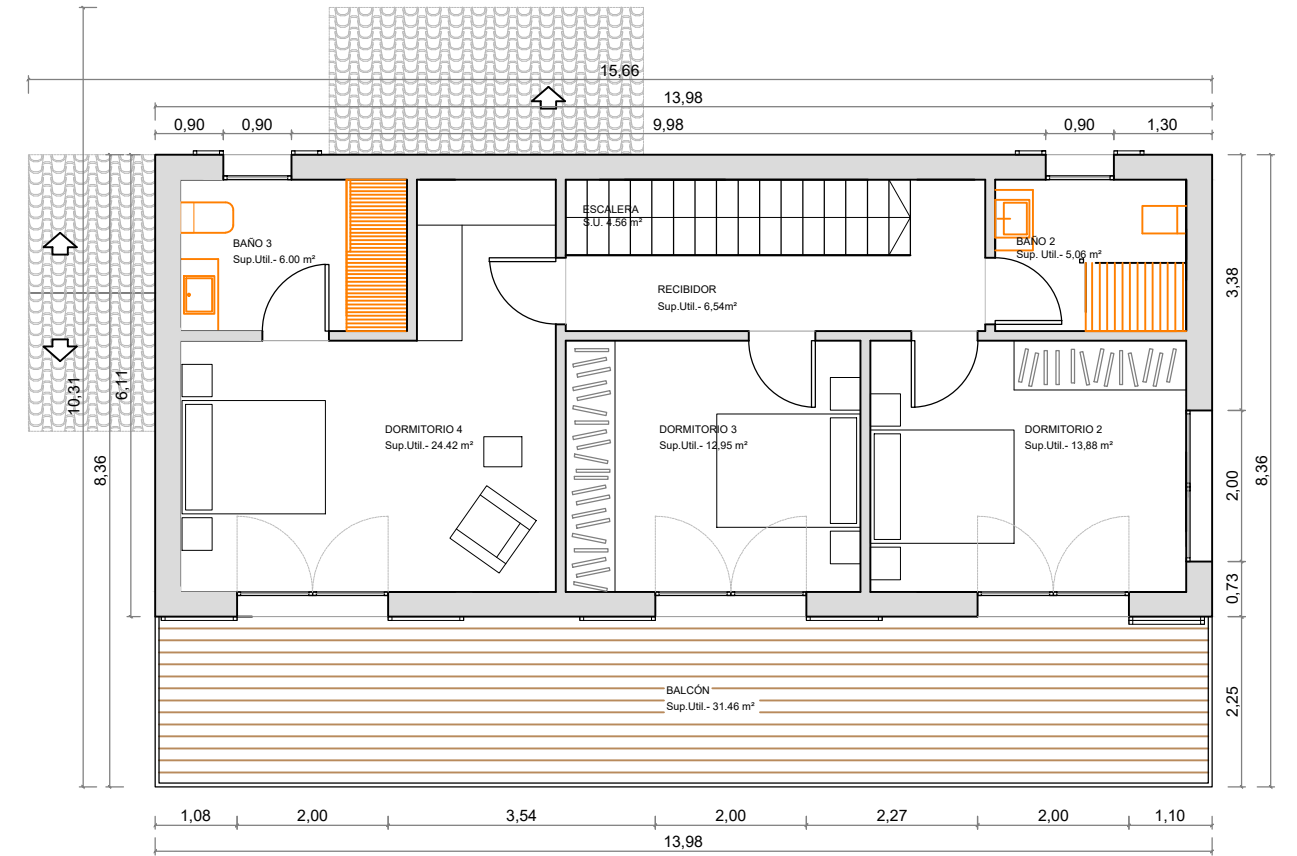
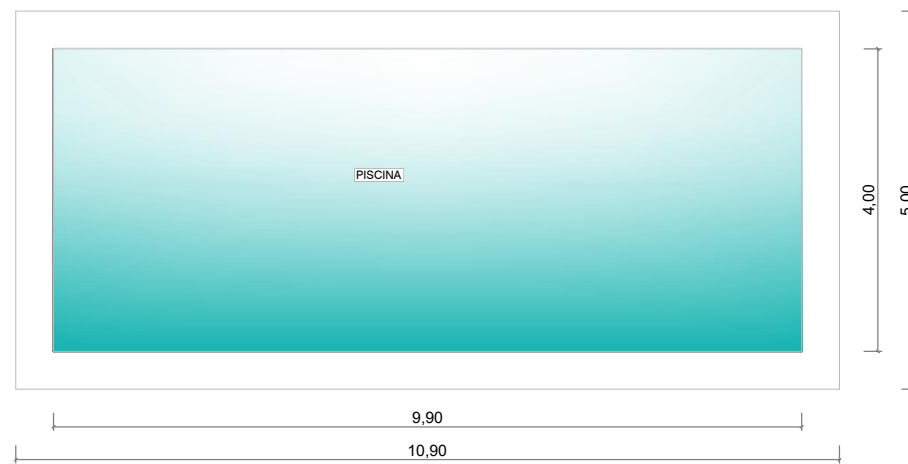


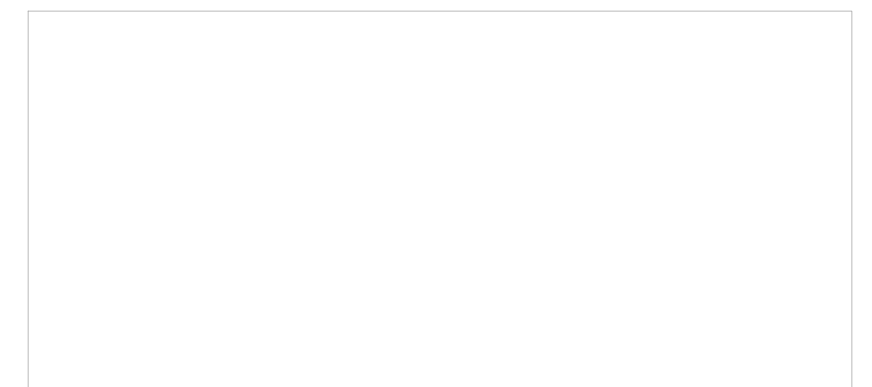
PLANTA BAJA



PLANTA PISO



	SUP. UTIL	SUP. CONSTRUIDA
PLANTA BAJA VIV.	85,99 m ²	109,19 m ²
PLANTA PISO VIV.	73,41 m ²	85,41 m ²
PORCHE	53,04 m ²	53,40 m ²
TOTAL	212,44 m²	248,00 m²



VIVIENDA UNIFAMILIAR AISLADA

FINCA NATALIE "M"

PLANO 01 DISTRIBUCION Y SUPERFICIES

ESCALA A1 1/50 A3 1/100 FECHA 16 JUNIO 2017